



生物制药隔膜阀

KINGSTONE PHARMACEUTICAL  
DIAPHRAGM



# 关于金斯顿

## About KST



KST.浙江金斯流体设备有限公司 是专业生产高精度不锈钢卫生级阀门、管件及泵等流体设备的专业厂家, 产品广泛应用于乳品、食品饮料、啤酒、生物制药及日用化工等工业领域。产品为遵循GMP和FDA规范要求, 特研制出高端无菌隔膜阀以适应医药行业需求。

KST.金斯顿公司积极引进国内外先进的生产设备和制造工艺。产品严格按ISO、DIN、IDF和3A等各国工业标准要求生产, 坚持把优质材料, 先进的工艺设计, 严格的制造标准及质量保证体系紧密结合在一起, 对产品质量实行全程监控, 并已获得ISO9001国际质量认证。目前,KST.卫生级阀门系列产品辐射全国并远销欧美,中东及东南亚地区,广泛受到客户好评!

KST.金斯顿公司始终以先进的管理体系, 一流的服务, 不断提升企业自身的品质, 使“KST.金斯顿”真正成为让国内外客户满意的合作伙伴。KST.公司欢迎您的光临!

Zhejiang KINGSTONE fluid equipment Co., Ltd. was founded in the last century 90 's, is a comprehensive enterprise specialized in R & D, design, production, sales and service. After many years of development in the health industry has formed its own quality management system. Products to comply with the GMP and FDA specification requirements, the development of high-end sterile diaphragm valve to meet the needs of the pharmaceutical industry. Products to comply with the GMP and FDA specification requirements, the development of high-end sterile diaphragm valve to meet the needs of the pharmaceutical industry.

KST. company actively introduce domestic and foreign advanced production equipment and manufacturing process. Products strictly according to ISO, DIN, IDF and 3A, and other industrial standards require production, adhere to the quality materials, advanced technology design, strict manufacturing standards and quality assurance system closely together, the implementation of product quality monitoring, and has obtained ISO9001 international quality certification. At present, the KST. sanitary grade valve series products are exported to Europe and America, the Middle East and Southeast Asia, the Middle East and Southeast Asia, widely praised by customers!

Zhejiang KINGSTONE fluid equipment Co., Ltd. has always been to the advanced management system, first-class service, and constantly improve the quality of their own, so that the "KST. Kingston" truly become the domestic and foreign customers satisfied with the partners. KST. welcome your presence!



粗糙度检测仪  
Roughness detector



光谱仪  
Spectroscopic instrument

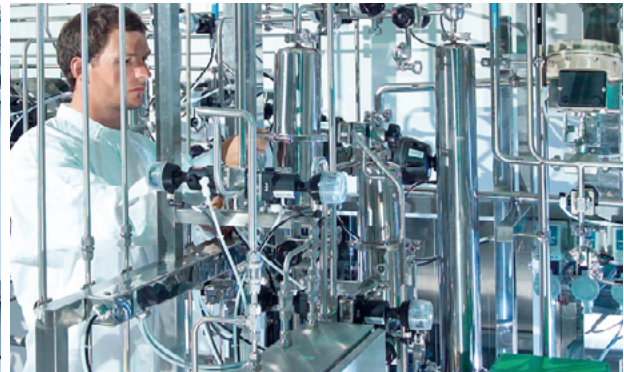


全自动焊机  
Automatic welder



KST— 品质源自努力！

KST—The high quality comes from efforts！



金斯顿隔膜阀在众多国际生物制药厂商中广泛应用







生物制药隔膜阀  
KINGSTONE  
PHARMACEUTICAL  
DIAPHRAGM







# 模块化设计 MODULAR DESIGN

由于其采用了模块化设计，几乎所有配置均可行。

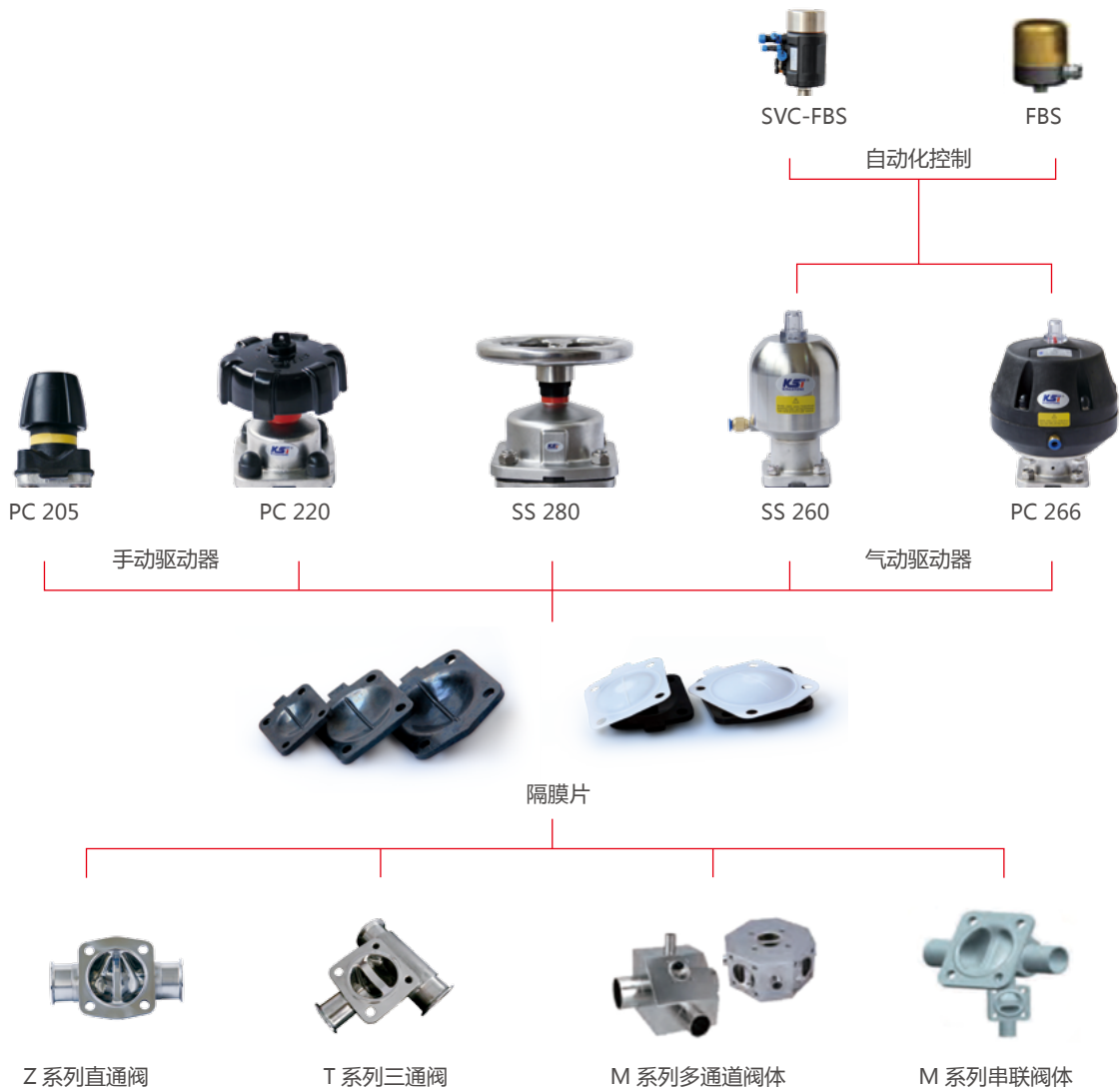
Because of its modular design, almost all of the configuration is feasible.

阀包括：

Valve including:

- > 阀体
- > 隔膜
- > 手柄或执行装置
- > 自动化和控制装置

- > Body
- > The diaphragm
- > Handle or actuator device
- > Automation and control device



## 执行机构与自动化控制

## EXECUTIVE MECHANISM AND AUTOMATIC CONTROL

### □ 智能控制反馈信号



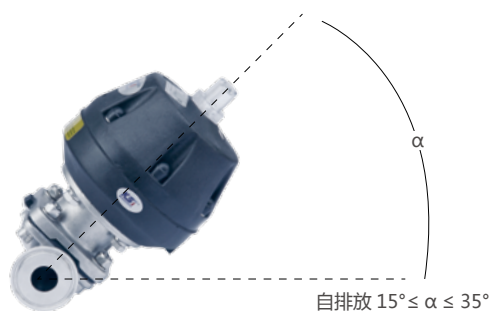
### 电磁阀控制

单作用 NC/FO		常开		关
单作用 NC/FO		常关		开
双作用		关		开

若带有反馈信号的阀门用于危险区域，在订购时请特别注明电子元件的防爆等级。

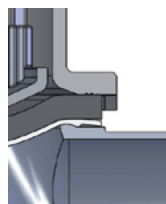
If vakes have dangerous ovea vmessage, please show electronic enplosion-proof class when making orders.

### □ 安装自动排净操作

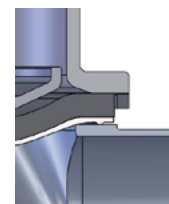


$\alpha=15^\circ$ 到  $35^\circ$ 。安装时，阀体两端刻痕标记应正面向上，12 点钟位置。显示正确的安装位置，优化排净能力。

$\alpha=15^\circ$  to  $35^\circ$ , when they are installmg, please sign both two sides to surface positine, 12 o'clock position, show correct installing position, optimize discharge position.



金斯顿独特的密封结构  
KST Special seal system



普通型密封结构  
Conventioall seal



# 无菌隔膜阀

## ASEPTIC DIAPHRAGM VALVE

### 应用领域

金斯顿生产的无菌隔膜阀可满足无菌和超卫生加工领域所有要求。广泛应用于医药、生物制药行业，以及半导体超纯行业，微电子工业，精细化工行业。

### Application domain

Kingston production of sterile diaphragm valves to meet all the requirements of the field of sterile and super health. Widely used in medicine, bio pharmaceutical industry, as well as semiconductor ultra pure industry, microelectronics industry, fine chemical industry.

### 标准化设计

无菌隔膜阀符合各式国际标准设计，满足各种配置需求。每个阀门串行化标识。保证完整材料的可追溯性。阀体表面高洁净平滑、无死角流道设计、自排净安装角度，易于拆卸、维护和清洁。KL无菌隔膜阀主要由阀体、隔膜阀、驱动器、自动化控制装置组成。顾客可依照设计需求选择产品。

### Standardization design

Aseptic diaphragm valves meet all kinds of international standards, to meet the needs of all kinds of configuration. Serial identification of each valve. Traceability of complete materials. Body surface Gao Jie net smooth, no dead corner flow channel design, self - net installation angle, easy to remove, maintenance and clean. KL aseptic diaphragm valve mainly by the valve, diaphragm valve, drive, automatic control device. Customers may choose products according to design requirements.

### 材质证明

MTR-Traceability test report

Raw Material Specification(weight%)

FDA-Declaration of conformity to FDA(CFR 21:177.2600or177.1550)

USP-Certificate of conformity to USP Class VI(EN10204 3.1)

Examined according to quality system BS EN

ISO 9001-2000 by BSI.(FM 85641)

### 阀体设计

Z系列-直通阀

DZ205,DZ220,DZ280-手动控制隔膜阀

DZ260,DZ266-气动控制隔膜阀

DUB230-180°U型弯焊隔膜阀

T系列-T型阀

DZD350-铸造/锻造阀体

DZD355-锻块精密加工阀体

DPU335-用水点阀

M型系列

DMP-多通道阀

GMP-串联阀



阀体形式 Body	铸造 Casted	锻造 Forged	锻块 Forged block
直通阀	0	0	
T型阀	0	0	0
串联阀	0	0	0
多通道阀			0

类型 Type	锻造 / 铸造 Casted/Forged	锻造 / 锻块 Forged/Forged block
材料 Material	316L,EN 1.4409 CF3M	316L,EN 1.4404 10213-4
铁素体 Fe	≤ 20%	≤ 3%
硫含量 Si	0.005-0.017%	0.005-0.012%





# 隔膜设计

## DIAPHRAGM DESIGN

隔膜有软性人造橡胶 (EPDM) 和硬性人造橡胶 (TFM) 可供选择。硬性人造橡胶由软性人造橡胶支撑。2片式设计允许两片人造橡胶各自独立地工作, 这样可减少因不同的热属性而引起的张紧。

每种应用有不同的工作条件, 因此对隔膜也有不同的要求。为选出最适合您的应用之隔膜, 需考虑以下因素: 工作压力、应用温度、工艺流体。

软性人造橡胶 (EPDM) 适用于大多数应用, 并适用于工作温度较高的应用。软性人造橡胶隔膜的典型特点是其对于机械污染介质的适用性。



The diaphragm has soft artificial rubber (EPDM) and hard artificial rubber (TFM) for chosen. Rigid artificial rubber is supported by soft rubber. 2 chip design allows two pieces of artificial rubber to work independently, so that it can reduce the tension caused by different thermal properties.

Each application has a different working condition, so the diaphragm also has different requirements. In order to select the most suitable for your application of the diaphragm, the following factors should be considered: working pressure, application temperature, process fluid.

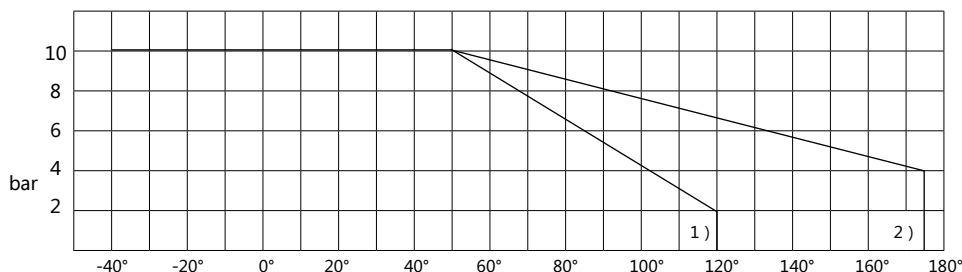
Soft synthetic rubber (EPDM) is suitable for most applications, and it is suitable for the application of higher operating temperature. The typical characteristic of soft artificial rubber diaphragm is its applicability to mechanical pollution medium.



特征	EPDM	EPDM+TFM
温度范围	-40°C -130°C	-5°C -160°C
耐酸性	好	极好
耐碱性	极好	极好
耐油性	一般	较好
耐颗粒	较好	一般

Standard	EPDM-TFM	EPDM
DN15		C1415014TE000015WH
DN20	C1415006TF000015WH	C1415004EP000015BL
	C1415003EP000015BL	
DN25	C1415006TF000040WH	C1415004EP000025BL
	C1415003EP000040BL	
DN40	C1415006TF000050WH	C1415004EP000040BL
	C1415003EP000050BL	
DN65\80		C1415004SI000080RE

建议的压力-温度



1) 仅限执行装置DN65/80

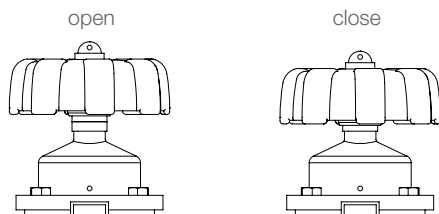
2) 除C/C手柄以外的所有其他执行装置和手柄

# 手动隔膜阀 KST220

## MANUAL DIAPHRAGM VALVE

工作压力：0-10bar  
 工作温度：-40~150℃  
 驱动机构：手动控制  
 密封材质：EPDM,EPDM+TFM  
 阀体设计：直通阀体设计  
 阀体材质：316L（铸造，EN1.4409 CF3M）  
 接口尺寸：DN20/DN80  
 接口方式：KST220-1：焊式、KST220-2焊卡式、  
 KST220-3:卡式  
 表面处理：外表面Ra≤0.5μm（SF1），  
 内表面Ra≤0.375μm（SF4）  
 接口标准：ISO,DIN,ASME BPE.3A,BS

Working pressure: 0-10bar  
 Working temperature: -40~150℃  
 Drive mechanism: manual control  
 Seal material: EPDM+TFM, EPDM  
 Body design: straight through valve design  
 Body material: 316L (casting, CF3M EN1.4409)  
 Interface size: DN20/DN80  
 Interface type: KST220-1 type, KST220-2 type welding: welding,  
 KST220-3: card  
 Surface treatment: the outer surface of Ra is less than or equal to  
 0.5 m (SF1),  
 The inner surface of Ra is less than or equal to 0.375 m (SF4)  
 Interface standard: ISO, DIN, BPE.3A BS, ASME



SIZE	DN20	DN25	DN40	DN50
open	11	14	22	28
close	1	1	1	1

### 驱动器

类型：KST-PC220

尺寸：DN20-DN80

主要材质：不锈钢阀帽、支座、阀杆、PC手轮

状态显示：手动开关状态显示如图

Drive

Type: KST-PC220

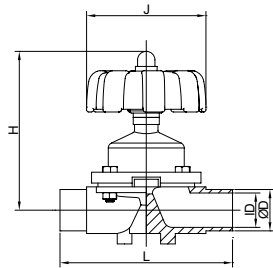
Size: DN20-DN80

Main material: stainless steel valve cap, bearing, valve stem, PC hand wheel

Status display: manual switch status display

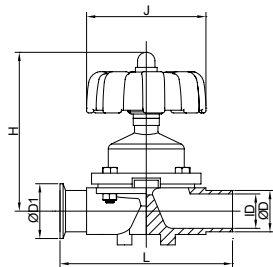


# 手动隔膜阀 MANUAL DIAPHRAGM VALVE



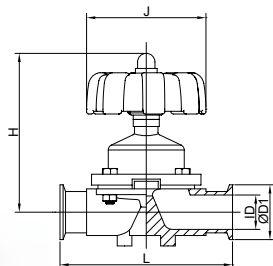
No.KST220-1

Size	ΦD	ΦD1	ID	L	H	J
DN15	19.1	-	15.8	108	95	65
DN20	22	-	18.1	108	105	90
DN25	28	-	22.1	120	110	90
DN32	35	-	28.5	153	140	110
DN40	40	-	34.8	153	140	110
DN50	52	-	47.5	173	170	130
DN65	67	-	60.3	216	200	180
DN80	88	-	81	254	220	180



No.KST220-2

Size	ΦD	ΦD1	ID	L	H	J
DN15	19.1	50.5	15.8	108	95	65
DN20	22	50.5	18.1	112.5	105	90
DN25	28	50.5	22.1	123.5	110	90
DN32	35	50.5	28.5	156	140	110
DN40	40	50.5	34.8	156	140	110
DN50	52	64	47.5	181.5	170	130
DN65	67	77.5	60.3	216	200	180
DN80	88	106	81	254	220	180



No.KST220-3

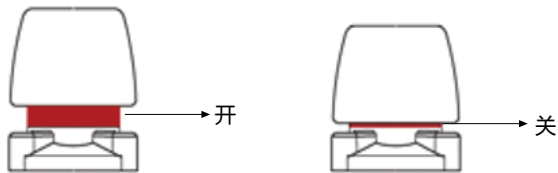
Size	ΦD	ΦD1	ID	L	H	J
DN15	-	50.5	15.8	108	95	65
DN20	-	50.5	18.1	117	105	90
DN25	-	50.5	22.1	127	110	90
DN32	-	50.5	28.5	159	140	110
DN40	-	50.5	34.8	159	140	110
DN50	-	64	47.5	190	170	130
DN65	-	77.5	60.3	216	200	180
DN80	-	106	81	254	220	180

# 迷你手动隔膜阀 KST205

## MINI MANUAL DIAPHRAGM VALVE

工作压力：0-10bar  
 工作温度：-40~150℃  
 驱动机构：手动控制  
 密封材质：EPDM,EPDM+TFM  
 阀体设计：直通阀体设计  
 阀体材质：316L（铸造，EN1.4409 CF3M）  
 接口尺寸：DN20-DN50  
 接口方式：KST205-1：焊式、KSYT205-2焊卡式、  
 KST205-3:卡式  
 表面处理：外表面Ra≤0.5μm（SF1），  
 内表面Ra≤0.375μm（SF4）  
 接口标准：ISO,DIN,ASME BPE.3A,BS

Working pressure: 0-10bar  
 Working temperature: -40~150℃  
 Drive mechanism: manual control  
 Seal material: EPDM+TFM, EPDM  
 Body design: straight through valve design  
 Body material: 316L (casting, CF3M EN1.4409)  
 Interface size: DN20-DN50  
 Interface type: KST205-1 type, KST205-2 type welding: welding,  
 KST205-3: card  
 Surface treatment: the outer surface of Ra is less than or equal to  
 0.5 m (SF1),  
 The inner surface of Ra is less than or equal to 0.375 m (SF4)  
 Interface standard: ISO, DIN, BPE.3A BS, ASME



Indicator	DN15
open	7
close	1

### 驱动器

类型：KST-PC205

尺寸：DN20-DN50

主要材质：PC手轮、阀帽、不锈钢阀杆、支座

状态显示：手动开关状态显示如图

Drive

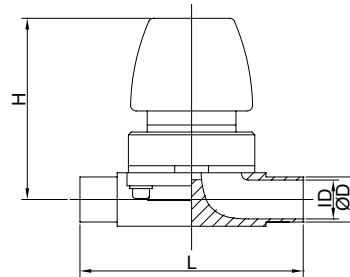
Type: KST-PC220

Size: DN20-DN50

Main material: PC hand wheel, valve cap, stainless steel valve stem, bearing

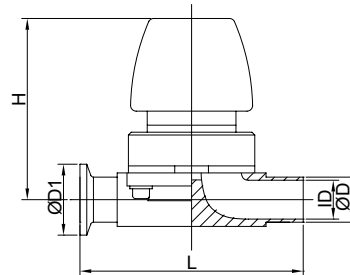
Status display: manual switch status display

# 迷你手动隔膜阀 MINI MANUAL DIAPHRAGM VALVE



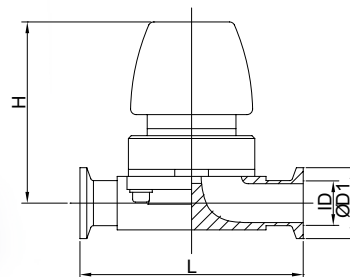
No.KST205-1

Size	ΦD	ΦD1	ID	L	H	J
DN8	12.7	-	9.4	72	55	35
DN10	12.7	-	9.4	72	55	35



No.KST205-2

Size	ΦD	ΦD1	ID	L	H	J
DN8	12.7	25.4	9.4	80.5	55	35
DN10	12.7	25.4	9.4	80.5	55	35



No.KST205-3

Size	ΦD	ΦD1	ID	L	H	J
DN8	-	25.4	9.4	89	55	35
DN10	-	25.4	9.4	89	55	35



# 手动隔膜阀 KST280

## MANUAL DIAPHRAGM VALVE

工作压力：0-10bar

工作温度：-40~150°C

驱动机构：手动控制

密封材质：EPDM,EPDM+TFM

阀体设计：直通阀体设计

阀体材质：316L（铸造，EN1.4409 CF3M）

接口尺寸：DN65-DN85

接口方式：KST280-1：焊式、KST280-2焊卡式、  
KST280-3:卡式

表面处理：外表面 $Ra \leq 0.5\mu\text{m}$ （SF1），  
内表面 $Ra \leq 0.375\mu\text{m}$ （SF4）

接口标准：ISO,DIN,ASME BPE.3A,BS

Working pressure: 0-10bar

Working temperature: -40~150°C

Drive mechanism: pneumatic control

Seal material: EPDM+TFM, EPDM

Body design: straight through valve design

Body material: 316L (casting, CF3M EN1.4409)

Interface size: DN65-DN85

Interface type: KST280-1 type, KST280-2 type welding: welding,  
KST280-3: card

Surface treatment: the outer surface of Ra is less than or equal to 0.5 m (SF1),

The inner surface of Ra is less than or equal to 0.375 m (SF4)

Interface standard: ISO, DIN, BPE.3A BS, ASME



### 驱动器

类型：KST-SS280

尺寸：DN65-DN80

主要材质：不锈钢手轮、壳体、阀杆、支座、PC显示盖

状态显示：手动开关状态显示如图

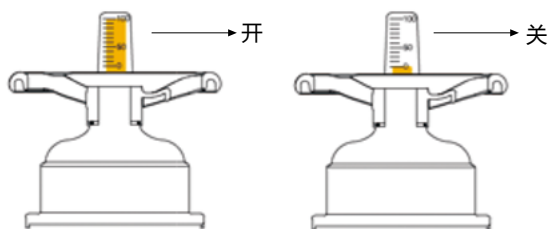
Drive

Type: KST-SS280

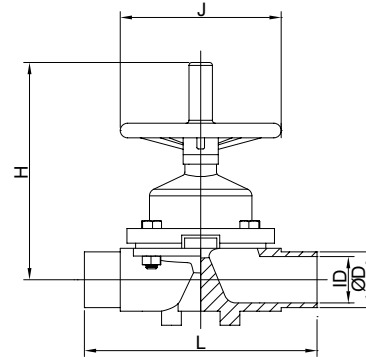
Size: DN65-DN80

Main material: stainless steel hand wheel, shell, valve stem, support, PC display cover

Status display: manual switch status display

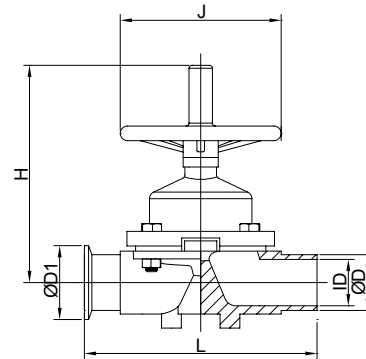


# 手动隔膜阀 MANUAL DIAPHRAGM VALVE



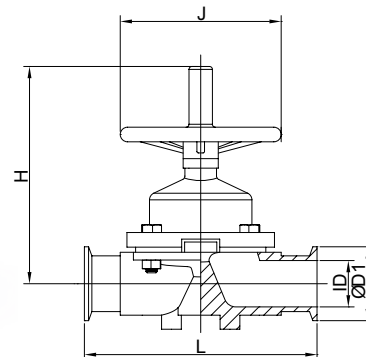
No.KST280-1

Size	ΦD	ΦD1	ID	L	H	J
Φ63.5	63.5	-	59.5	216	264	180
Φ76	76.2	-	72.5	254	269	180
Φ89	88.9	-	84.9	254	274	180



No.KST280-2

Size	ΦD	ΦD1	ID	L	H	J
Φ63.5	63.5	77.5	59.5	216	264	180
Φ76	76.2	91	72.5	254	269	180
Φ89	88.9	106	84.9	254	274	180



No.KST280-3

Size	ΦD	ΦD1	ID	L	H	J
Φ63.5	-	77.5	59.5	216	264	180
Φ76	-	91	72.5	254	269	180
Φ89	-	106	84.9	254	274	180

# 气动隔膜阀 KST266

## PNEUMATIC DIAPHRAGM VALVE

工作压力：0-10bar  
 工作温度：-40~150℃  
 驱动机构：气动控制  
 密封材质：EPDM,EPDM+TFM  
 阀体设计：直通阀体设计  
 阀体材质：316L（铸造，EN1.4409 CF3M）  
 接口尺寸：DN15-DN80  
 接口方式：KST266-1：焊式、KST266-2焊卡式、  
 KST266-3:卡式  
 表面处理：外表面 $Ra \leq 0.5\mu m$ （SF1），  
 内表面 $Ra \leq 0.375\mu m$ （SF4）  
 接口标准：ISO,DIN,ASME BPE.3A,BS

Working pressure: 0-10bar  
 Working temperature: -40~150℃  
 Drive mechanism: pneumatic control  
 Seal material: EPDM+TFM, EPDM  
 Body design: straight through valve design  
 Body material: 316L (casting, CF3M EN1.4409)  
 Interface size: DN15-DN20  
 Interface type: KST66-1 type, KST266-2 type welding: welding,  
 KST266-3: card  
 Surface treatment: the outer surface of Ra is less than or equal to  
 0.5 m (SF1),  
 The inner surface of Ra is less than or equal to 0.375 m (SF4)  
 Interface standard: ISO, DIN, BPE.3A BS, ASME



### 驱动器

类型：KST-PC266

尺寸：DN20-DN80

主要材质：PC显示盖、不锈钢支座、阀杆、壳体

状态显示：气动开关状态显示如图

信号反馈：可加装FBS、FBS-SVC（电磁阀智能控制）

Drive

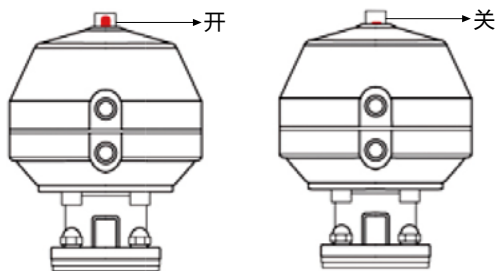
Type: KST-PC266

Size: DN20-DN80

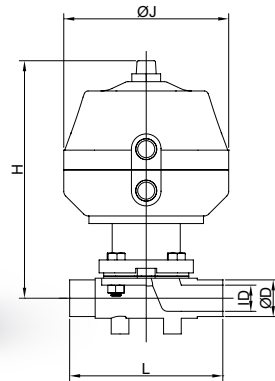
Main material: PC display cover, stainless steel support, valve stem, shell

Status display: pneumatic switch state display right

Signal feedback: can be installed FBS-SVC, FBS (solenoid valve intelligent control)

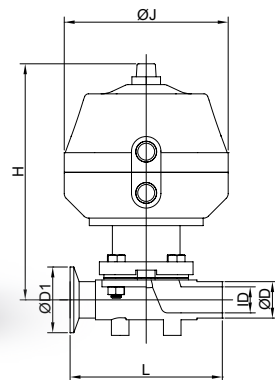


# 气动隔膜阀 PNEUMATIC DIAPHRAGM VALVE



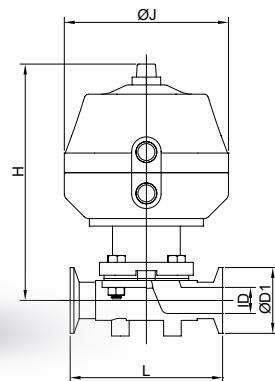
No.KST266-1

Size	ΦD	ΦD1	ID	L	H	J
DN20	22	-	18.1	108	185	128
DN25	28	-	22.1	120	185	128
DN32	35	-	28.5	153	230	164
DN40	40	-	34.8	153	230	164
DN50	52	-	47.5	173	245	215
DN65	67	-	60.3	216	290	215
DN80	88	-	81	254	300	215



No.KST266-2

Size	ΦD	ΦD1	ID	L	H	J
DN20	22	50.5	18.1	112.5	185	128
DN25	28	50.5	22.1	123.5	185	128
DN32	35	50.5	28.5	156	230	164
DN40	40	50.5	34.8	156	230	164
DN50	52	64	47.5	181.5	245	215
DN65	67	77.5	60.3	216	290	215
DN80	88	106	81	254	300	215



No.KST266-3

Size	ΦD	ΦD1	ID	L	H	J
DN20	-	50.5	18.1	117	185	128
DN25	-	50.5	22.1	127	185	128
DN32	-	50.5	28.5	159	230	164
DN40	-	50.5	34.8	159	230	164
DN50	-	64	47.5	190	245	215
DN65	-	77.5	60.3	216	290	215
DN80	-	106	81	254	300	215



# 气动隔膜阀 KST210

## PNEUMATIC DIAPHRAGM VALVE

工作压力：0-10bar

工作温度：-40~150°C

驱动机构：气动控制

密封材质：EPDM,EPDM+TFM

阀体设计：直通阀体设计

阀体材质：316L（铸造，EN1.4409 CF3M）

接口尺寸：DN15-DN80

接口方式：KST210-1：焊式、KST210-2：焊卡式、  
KST210-3:卡式

表面处理：外表面 $Ra \leq 0.5\mu m$ （SF1），  
内表面 $Ra \leq 0.375\mu m$ （SF4）

接口标准：ISO,DIN,ASME BPE.3A,BS

Working pressure: 0-10bar

Working temperature: -40~150°C

Drive mechanism: pneumatic control

Seal material: EPDM+TFM, EPDM

Body design: straight through valve design

Body material: 316L (casting, CF3M EN1.4409)

Interface size: DN15-DN80

Interface type: KST210-1 type, KST210-2 type welding: welding,  
KST210-3: card

Surface treatment: the outer surface of  $Ra$  is less than or equal to 0.5 m (SF1),

The inner surface of  $Ra$  is less than or equal to 0.375 m (SF4)

Interface standard: ISO, DIN, BPE.3A BS, ASME



### 驱动器

类型：KST-SS260

尺寸：DN15-DN80

主要材质：PC显示盖、不锈钢支座、阀杆、壳体

状态显示：气动开关状态显示如图

信号反馈：可加装FBS、FBS-SVC（电磁阀智能控制）

Drive

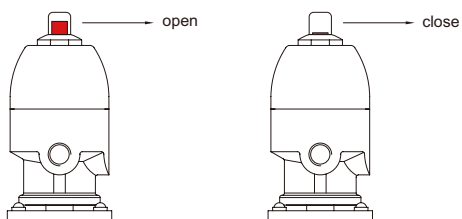
Type: KST-SS260

Size: DN15-DN80

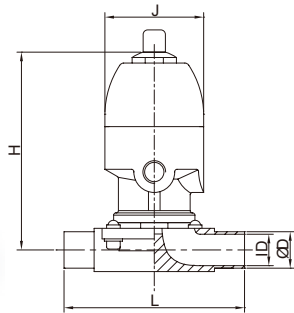
Main material: PC display cover, stainless steel support, valve stem, shell

Status display: pneumatic switch state display

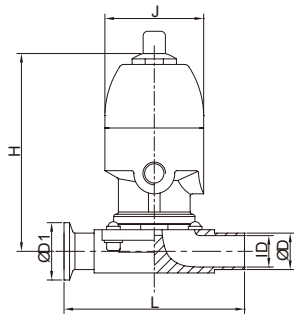
Signal feedback: can be installed FBS-SVC, FBS (solenoid valve intelligent control)



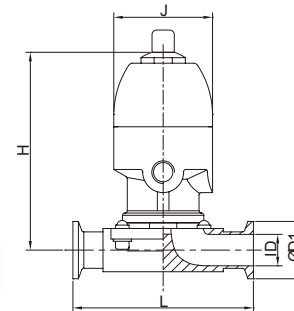
# 气动隔膜阀 PNEUMATIC DIAPHRAGM VALVE



No.KST210-1						
Size	ΦD	ΦD1	ID	L	H	J
DN20	22	-	18.1	108	128	96
DN25	28	-	22.1	120	128	96
DN32	35	-	28.5	153	210	110
DN40	40	-	34.8	153	210	110
DN50	52	-	47.5	173	260	137
DN65	67	-	60.3	216	310	157
DN80	88	-	81	254	310	157



No.KST210-1						
Size	ΦD	ΦD1	ID	L	H	J
DN20	22	50.5	18.1	112.5	128	96
DN25	28	50.5	22.1	123.5	128	96
DN32	35	50.5	28.5	156	210	110
DN40	40	50.5	34.8	156	210	110
DN50	52	64	47.5	181.5	260	137
DN65	67	77.5	60.3	216	310	157
DN80	88	106	81	254	310	157



No.KST210-1						
Size	ΦD	ΦD1	ID	L	H	J
DN20	-	50.5	18.1	117	128	96
DN25	-	50.5	22.1	127	128	96
DN32	-	50.5	28.5	159	210	110
DN40	-	50.5	34.8	159	210	110
DN50	-	64	47.5	190	260	137
DN65	-	77.5	60.3	216	310	157
DN80	-	106	81	254	310	157

# 迷你气动隔膜阀 KST260

## MINI PNEUMATIC DIAPHRAGM VALVE

工作压力：0-10bar  
 工作温度：-40~150°C  
 驱动机构：气动控制  
 密封材质：EPDM,EPDM+TFM  
 阀体设计：直通阀体设计  
 阀体材质：316L（铸造，EN1.4409 CF3M）  
 接口尺寸：DN20-DN50  
 接口方式：KST260-1：焊式、KST260-2焊卡式、  
 KST260-3:卡式  
 表面处理：外表面Ra≤0.5μm（SF1），  
 内表面Ra≤0.375μm（SF4）  
 接口标准：ISO,DIN,ASME BPE.3A,BS

Working pressure: 0-10bar  
 Working temperature: -40~150°C  
 Drive mechanism: pneumatic control  
 Seal material: EPDM+TFM, EPDM  
 Body design: straight through valve design  
 Body material: 316L (casting, CF3M EN1.4409)  
 Interface size: DN20-DN50  
 Interface type: KST260-1 type, KST260-2 type welding: welding,  
 KST260-3: card  
 Surface treatment: the outer surface of Ra is less than or equal to  
 0.5 m (SF1),  
 The inner surface of Ra is less than or equal to 0.375 m (SF4)  
 Interface standard: ISO, DIN, BPE.3A BS, ASME



### 驱动器

类型：KST-SS260

尺寸：DN15-DN20

主要材质：PC显示盖、不锈钢支座、阀杆、壳体

状态显示：气动开关状态显示如图

信号反馈：可加装FBS、FBS-SVC（电磁阀智能控制）

Drive

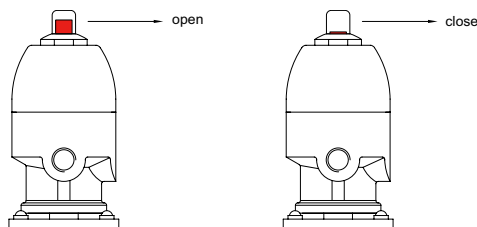
Type: KST-SS260

Size: DN15-DN20

Main material: PC display cover, stainless steel support, valve stem, shell

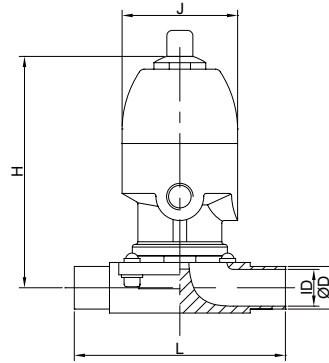
Status display: pneumatic switch state display

Signal feedback: can be installed FBS-SVC, FBS (solenoid valve intelligent control)



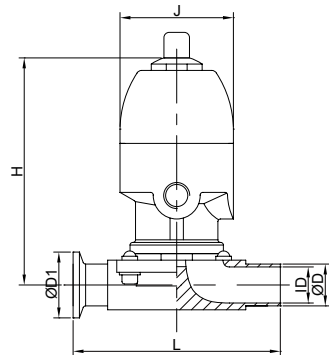
## 迷你气动隔膜阀

## MINI PNEUMATIC DIAPHRAGM VALVE



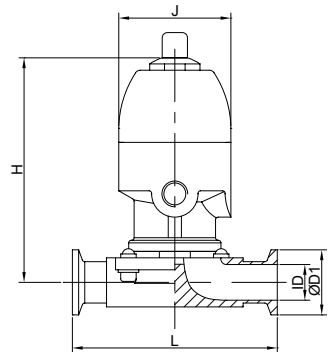
No.KST260-1

Size	ΦD	ΦD1	ID	L	H	J
DN8	11	-	8	72	85	43.5
DN10	13	-	10	72	85	43.5
DN15	18	-	15	108	85	43.5



No.KST260-2

Size	ΦD	ΦD1	ID	L	H	J
DN8	11	25.4/34	8	80.5	85	43.5
DN10	13	25.4/34	10	80.5	85	43.5
DN15	18	25.4/34	15	108	85	43.5



No.KST260-3

Size	ΦD	ΦD1	ID	L	H	J
DN8	-	25.4/34	8	89	85	43.5
DN10	-	25.4/34	10	89	85	43.5
DN15	-	25.4/34	15	108	85	43.5



# T型隔膜阀 KST350

## T TYPE DIAPHRAGM VALVE

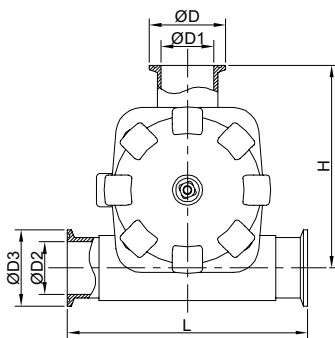
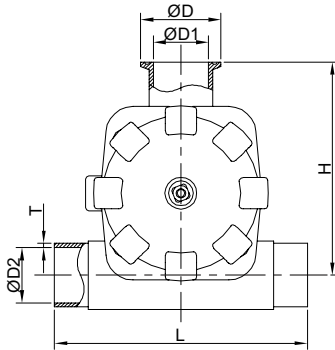
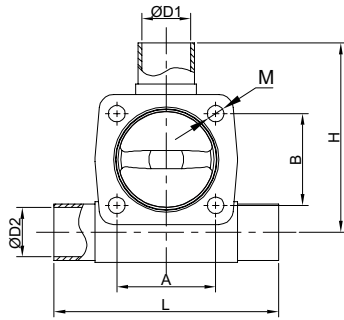
- > 工作压力：0-10bar
- > 工作温度：-40~150°C
- > 驱动机构：手动控制
- > 密封材质：EPDM,EPDM+TFM
- > 阀体设计：零死角设计
- > 阀体材质：316L ( 铸造 , EN1.4409 CF3M )
- > 接口尺寸：主通道 ( DN1 ) DN25-DN65  
出料口 ( DN2 ) DN15-DN40
- > 接口方式：KST350-6：焊式，KST350-9：卡式
- > 表面处理：外表面 $Ra \leq 0.5\mu\text{m}$  ( SF1 ) ，  
内表面 $Ra \leq 0.375\mu\text{m}$  ( SF4 )
- > 接口标准：ISO,DIN,ASME BPE.3A,BS

- > Working pressure: 0-10bar
- > Working temperature: -40~150°C
- > Drive mechanism: manual control
- > Seal material: EPDM+TFM, EPDM
- > Body design: Zero dead angle design
- > Body material: 316L (casting, CF3M EN1.4409)
- > Interface size: main channel (DN1) DN25-DN65  
Discharge port (DN2) DN15-DN40
- > Interface mode: KST350-6: Welding,KST350-9:Card
- > Surface treatment: the outer surface of Ra is less than or equal to 0.5 m (SF1),  
The inner surface of Ra is less than or equal to 0.375 m (SF4)
- > Interface standard: ISO, DIN, BPE.3A BS, ASME



# T型隔膜阀

## T TYPE DIAPHRAGM VALVE



No.KST350-6

Size	D1	D2	A	B	H	L	M
DN20-15	9.5	15.8	22	22	63	127	M4
DN25-20	15.8	22.1	54	46	97	127	M6
DN25-25	22.1	22.1	54	46	101	127	M8
DN40-20	15.8	34.8	54	46	104	146	M6
DN40-25	22.1	34.8	54	46	110	146	M8
DN40-32	28.5	34.8	70	65	130	159	M10
DN40-40	34.8	34.8	70	65	140	159	M10
DN50-20	15.8	47.5	54	46	115	146	M6
DN50-25	22.1	47.5	54	46	118	146	M8
DN50-32	28.5	47.5	70	65	136	159	M10
DN50-40	34.8	47.5	70	65	145	159	M10
DN50-50	47.5	47.5	82	78	155	190	M12
DN65-20	15.8	60.3	54	46	114	146	M6
DN65-25	22.1	60.3	54	46	114	146	M8
DN65-40	34.8	60.3	70	65	136	168	M10

No.KST350-9

Size	D	D1	D2	H	L	T
DN20-15	50.5	9.5	15.8	63	127	2
DN25-20	50.5	15.8	22.1	97	127	2
DN25-25	50.5	22.1	22.1	101	127	2
DN40-20	50.5	15.8	34.8	104	146	2
DN40-25	50.5	22.1	34.8	110	146	2
DN40-32	50.5	28.5	34.8	130	159	2
DN40-40	50.5	34.8	34.8	140	159	2
DN50-20	50.5	15.8	47.5	115	146	2
DN50-25	50.5	22.1	47.5	118	146	2
DN50-32	50.5	28.5	47.5	136	159	2
DN50-40	50.5	34.8	47.5	145	159	2
DN50-50	64.0	47.5	47.5	155	190	2
DN65-20	77.5	15.8	60.3	114	146	2
DN65-25	77.5	22.1	60.3	114	146	2
DN65-40	77.5	34.8	60.3	136	168	2

No.KST350-12

Size	D	D1	D2	D3	H	L
DN20-15	50.5	9.5	15.8	50.5	63	127
DN25-20	50.5	15.8	22.1	50.5	97	127
DN25-25	50.5	22.1	22.1	50.5	101	127
DN40-20	50.5	15.8	34.8	50.5	104	146
DN40-25	50.5	22.1	34.8	50.5	110	146
DN40-32	50.5	28.5	34.8	50.5	130	159
DN40-40	50.5	34.8	34.8	50.5	140	159
DN50-20	50.5	15.8	47.5	50.5	115	146
DN50-25	50.5	22.1	47.5	50.5	118	146
DN50-32	50.5	28.5	47.5	50.5	136	159
DN50-40	50.5	34.8	47.5	50.5	145	159
DN50-50	64.0	47.5	47.5	64.0	155	190
DN65-20	50.5	15.8	60.3	77.5	114	146
DN65-25	50.5	22.1	60.3	77.5	114	146
DN65-40	50.5	34.8	60.3	77.5	136	168

# U型隔膜阀 KST230

## U TYPE DIAPHRAGM VALVE

工作压力：0-10bar  
 工作温度：-40~150℃  
 驱动机构：手动控制  
 密封材质：EPDM,EPDM+TFM  
 阀体设计：U型弯焊  
 阀体材质：316L（铸造，EN1.4409 CF3M）  
 接口尺寸：主通道（DN1）DN25-DN80  
           出料口（DN2）DN15-DN50  
 接口方式：KST230-2：焊式  
 表面处理：外表面Ra≤0.5μm（SF1），  
           内表面Ra≤0.375μm（SF4）  
 接口标准：ISO,DIN,ASME BPE.3A,BS

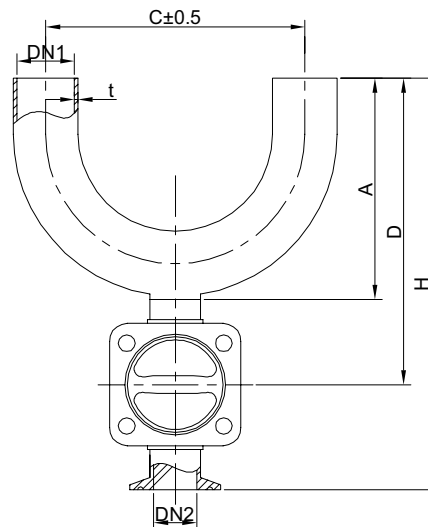


Working pressure: 0-10bar  
 Working temperature: -40~150℃  
 Drive mechanism: manual control  
 Seal material: EPDM+TFM, EPDM  
 Body design: U type bending welding  
 Body material: 316L (casting, CF3M EN1.4409)  
 Interface size: main channel (DN1) DN25-DN80  
 Discharge port (DN2) DN15-DN50  
 Interface mode: KST230-2: Welding  
 Surface treatment: the outer surface of Ra is less than or equal to 0.5 m (SF1),  
 The inner surface of Ra is less than or equal to 0.375 m (SF4)  
 Interface standard: ISO, DIN, BPE.3A BS, ASME

DN1	DN2				
	DN15	DN20	DN25	DN40	DN50
DN25	⊙	⊙	⊙		
DN40	⊙	⊙	⊙	⊙	
DN50	⊙	⊙	⊙	⊙	⊙
DN65	⊙	⊙	⊙	⊙	⊙
DN80	⊙	⊙	⊙	⊙	⊙

## U型隔膜阀

## U TYPE DIAPHRAGM VALVE



No.KST230-2

Size	A	C	D	H	t
DN20-15	86.2	114.4	108.2	139.7	1.6
DN20-20	86.2	114.4	117.7	168.5	1.6
DN25-20	89.4	114.4	130.4	171.7	1.2
DN25-25	89.4	152.4	138.9	198.9	1.2
DN40-15	135.6	152.4	157.6	189.1	1.2
DN40-20	135.6	152.4	167.1	217.9	1.2
DN40-25	135.6	152.4	185.5	245.5	1.2
DN40-40	135.6	152.4	215.5	295.0	1.2
DN50-15	155.4	152.4	177.4	208.9	1.2
DN50-20	155.4	152.4	186.9	237.7	1.2
DN50-25	155.4	152.4	204.9	264.9	1.2
DN50-40	155.4	152.4	235.2	314.7	1.2
DN65-20	181.3	190.5	212.8	263.6	1.6
DN65-25	181.3	190.5	230.8	290.8	1.6
DN65-40	181.3	190.5	260.8	340.3	1.6



# U型隔膜阀 KST330

## U TYPE DIAPHRAGM VALVE

工作压力：0-10bar

工作温度：-40~150°C

驱动机构：手动控制

密封材质：EPDM,EPDM+TFM

阀体设计：三通阀体设计（带直部弯头）设计

阀体材质：316L（铸造，EN1.4409 CF3M）

接口尺寸：主通道（DN1）DN25-DN65，

出料口（DN2）DN15-DN50

接口方式：KST330-6：焊式

表面处理：外表面 $Ra \leq 0.5\mu\text{m}$ （SF1），

内表面 $Ra \leq 0.375\mu\text{m}$ （SF4）

接口标准：ISO,DIN,ASME BPE.3A,BS



Working pressure: 0-10bar

Working temperature: -40~150°C

Drive mechanism: manual control

Seal material: EPDM+TFM, EPDM

Body design: three valve body design (with straight elbow) design

Body material: 316L (casting, CF3M EN1.4409)

Interface size: main channel (DN1) DN25-DN65, DN15-DN50 (DN2)

Interface mode: KST330-6: Welding

Surface treatment: the outer surface of  $Ra$  is less than or equal to 0.5  $\mu\text{m}$  (SF1),

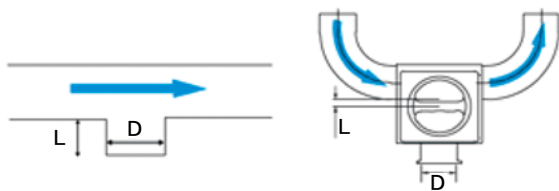
The inner surface of  $Ra$  is less than or equal to 0.375  $\mu\text{m}$  (SF4)

Interface standard: ISO, DIN, BPE.3A BS, ASME

尺寸表	DN2 (出料口)					
	DN15	DN20	DN25	DN40	DN50	
DN1	DN15	⊙				
	DN25		⊙			
	DN40	⊙	⊙	⊙	⊙	
	DN50	⊙	⊙	⊙	⊙	⊙
	DN65	⊙	⊙	⊙	⊙	

避免U型三通支管焊直通隔膜阀隔堰之间的滞留，减少焊缝数，提高接触表面（MOC）的光洁度，具有最小长度的水平管路。

基于SAME BPE 2005：SD-3.11.1无菌设计规范要求，L/D比 $\leq 2:1$ ，消除因出料口产生的流体滞留区，造成细菌滋生的隐患，确保循环回路绝对安全。



BPE:SD-3.11.1

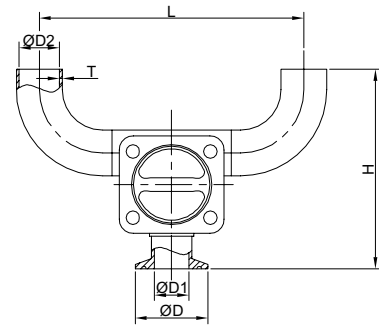
DPU330-6 L/D比 $\leq 2:1$

To avoiding a U-shaped three-way pipe welding straight through diaphragm valve weir partition retention, reduce the number of welding, improve finish of contact surface (MOC), with a minimum length of horizontal pipeline.

Based on the same BPE 2005:SD-3.11.1 aseptic design specification for L / D ratio is less than or equal to 2:1, eliminate due to a material inlet fluid retention area, causing bacteria risks to ensure the absolute safety of loop.

## U型隔膜阀

## U TYPE DIAPHRAGM VALVE



No.KST330-6

Size	D	D1	D2	H	L	T
DN20-15	50.5	9.5	15.8	120.2	110.2	1.65
DN25-20	50.5	15.8	22.1	163.7	166.2	1.65
DN25-25	50.5	22.1	22.1	167.7	166.2	1.65
DN40-20	50.5	15.8	34.8	189.8	204.4	1.65
DN40-25	50.5	22.1	34.8	195.8	204.4	1.65
DN40-32	50.5	28.5	34.8	215.8	229.4	1.65
DN40-40	50.5	34.8	34.8	225.8	229.4	1.65
DN50-20	50.5	15.8	47.5	219.8	242.4	1.65
DN50-25	50.5	22.1	47.5	222.8	242.4	1.65
DN50-32	50.5	28.5	47.5	240.8	267.4	1.65
DN50-40	50.5	34.8	47.5	249.8	267.4	1.65
DN50-50	64.0	47.5	47.5	259.8	282.4	1.65
DN65-20	50.5	15.8	60.3	237.9	280.6	1.65
DN65-25	50.5	22.1	60.3	237.9	280.6	1.65
DN65-40	50.5	34.8	60.3	259.9	310.6	1.65

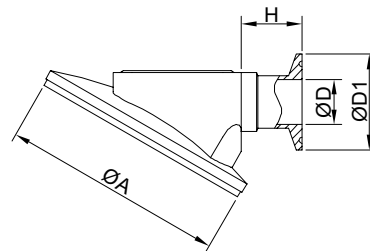
# 罐底隔膜阀 KST221

## TANK BOTTOM DIAPHRAGM VALVE

工作压力：0-10bar  
 工作温度：-40~150℃  
 驱动机构：手动控制  
 密封材质：EPDM,EPDM+TFM  
 阀体设计：直通阀体设计  
 阀体材质：316L（铸造，EN1.4409 CF3M）  
 接口尺寸：DN20/DN50  
 接口方式：KST221-1：焊式、KST221-2焊卡式、  
 KST221-3:卡式  
 表面处理：外表面Ra≤0.5μm（SF1），  
 内表面Ra≤0.375μm（SF4）  
 接口标准：ISO,DIN,ASME BPE.3A,BS



Working pressure: 0-10bar  
 Working temperature: -40~150℃  
 Drive mechanism: manual control  
 Seal material: EPDM+TFM, EPDM  
 Body design: straight through valve design  
 Body material: 316L (casting, CF3M EN1.4409)  
 Interface size: DN20/DN50  
 Interface type: KST221-1 type, KST221-2 type welding:  
 welding, KST221-3: card  
 Surface treatment: the outer surface of Ra is less than or equal  
 to 0.5 m (SF1),  
 The inner surface of Ra is less than or equal to 0.375 m (SF4)  
 Interface standard: ISO, DIN, BPE.3A BS, ASME



No.KST221-1

Size	D	D1	H	A
DN15	15.8	50.5	25	118
DN20	18.1	50.5	32	118
DN25	22.1	50.5	32	118
DN32	28.5	50.5	36	145
DN40	34.8	50.5	36	145
DN50	47.5	64	38	185

### 驱动器（气动）

类型：KST-PC221  
 尺寸：DN20-DN50  
 主要材质：不锈钢阀帽、支座、阀杆、PC手轮  
 状态显示：手动开关状态显示如图

Drive (pneumatic)  
 Type: KST-PC221  
 Size: DN20-DN50  
 Main material: stainless steel valve cap, bearing, valve stem, PC  
 hand wheel  
 Status display: manual switch status display

SIZE	DN20	DN25	DN40	DN50
open	11	14	22	28
close	1	1	1	1

## 多通道隔膜阀

## MULTI CHANNEL DIAPHRAGM VALVE

工作压力：0-10bar

工作温度：-40~150°C

驱动机构：手动/气动控制

密封材质：EPDM,EPDM+TFM

阀体设计：OEM/ODM

阀体材质：316L ( 铸造 , EN1.4409 CF3M )

表面处理：外表面 $Ra \leq 0.5\mu m$  ( SF1 ) ,  
内表面 $Ra \leq 0.375\mu m$  ( SF4 )

接口标准：ISO,DIN,ASME BPE.3A,BS

Working pressure: 0-10bar

Working temperature: -40~150

Drive mechanism: manual / pneumatic control

Seal material: EPDM+TFM, EPDM

Valve design: OEM/ODM

Body material: 316L (casting, CF3M EN1.4409)

Surface treatment: the outer surface of  $Ra$  is less than or equal to 0.5 m (SF1),

The inner surface of  $Ra$  is less than or equal to 0.375 m (SF4)

Interface standard: ISO, DIN, BPE.3A BS, ASME



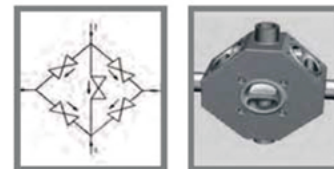
### 带菌灭口的T型阀



### 集成化的GMP阀



### 层析阀



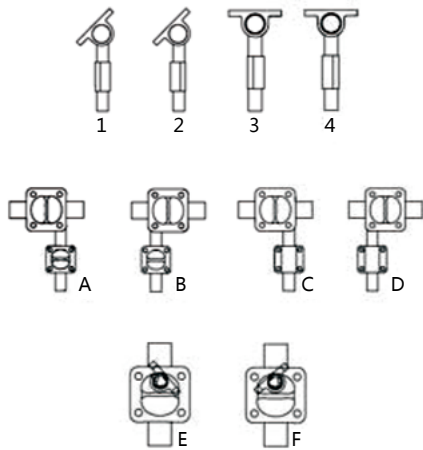


# 串联隔膜阀

## SERIES DIAPHRAGM VALVE

串联阀有各种不同的角度和位置可供选择。串联阀有锻造材质或毛坯材质可供选择（如图所示）。

Series valves are available in a variety of different angles and positions. The series valve has a forged material or a blank material to choose (as shown in figure).



主阀水平自排尽安装，支阀左侧垂直安装



主阀水平自排尽安装，支阀右侧垂直安装



主阀水平向上安装，支阀右（左）侧垂直安装



主阀水平自排尽安装，支阀左侧倒水平自排尽安装

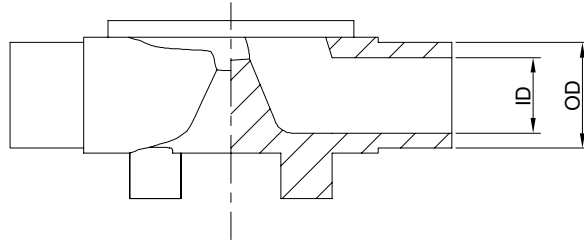


主阀垂直安装，支阀上部水平自排尽安装





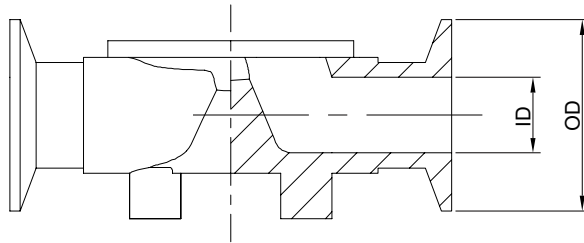
# 直通阀底的尺寸 STRAIGHT VALVE BOTTOM SIZE



焊式 (mm)

No.KST220-1

SIZE	ISO		3A/BPE		DIN		BS	
	OD	ID	OD	ID	OD	ID	OD	ID
DN8	12.7	9.4	-	-	11	8	-	-
DN10	12.7	9.4	-	-	13	10	-	-
DN15	12.7	9.4	12.7	9.4	18	15	12.7	9.5
DN20	19.1	15.8	19.1	15.8	22	19	19.1	15.9
DN25	25	22.6	25.4	22.1	28	25	25.4	22.2
DN32	-	-	-	-	35	32	-	-
DN40	38	35.6	38.1	34.8	40	37	38.1	34.9
DN50	51	48.6	50.8	47.5	52	49	50.8	47.6
DN65	63.5	60.3	63.5	60.2	70	66	63.5	60.3
DN80	76.1	72.9	76.2	72.9	85	81	76.2	73



焊式 (mm)

No.KST220-3

SIZE	ISO		3A/BPE		DIN		BS	
	OD	ID	OD	ID	OD	ID	OD	ID
DN8	25	9.4	-	-	34	8	-	-
DN10	25	9.4	-	-	34	10	-	-
DN15	25	9.4	25	9.4	34	15	25	9.5
DN20	25	15.8	25	15.8	34	19	25	15.9
DN25	50.5	22.6	50.4	22.1	50.5	25	50.5	22.2
DN32	-	-	-	-	50.5	32	-	-
DN40	50.5	35.6	50.4	34.8	50.5	37	50.5	34.9
DN50	64	48.6	63.9	47.5	64	49	64	47.6
DN65	77.5	60.3	77.5	60.2	91	66	77.5	60.3
DN80	91	72.9	90.9	72.9	106	81	91	73

浙江金斯顿流体设备有限公司  
ZHEJIANG KINGSTONE FLUID EQUIPMENT CO., LTD.

地址：温州经济技术开发区滨海园区明珠路 757 号

Add: No. 757, Mingzhu Road, Binhai Garden,  
Wenzhou Economic Development Zone, China.

电话 (Tel): +86-577-8699 5222

传真 (Fax): +86-577-8699 8689 86995111

邮编 (P.c) : 325025

[www.cnkingstone.com](http://www.cnkingstone.com)

[www.china-kst.com](http://www.china-kst.com)

E-mail: [kingst\\_valve@aliyun.com](mailto:kingst_valve@aliyun.com)

本目录所有产品规格、如有更改恕不另行通知



官方网站



微信公众号



诚招代理商：

